



MOS ESTIMATES REPORT

MOS PERIODS: MARCH 2022,
APRIL 2022 & MAY 2022

Important notice

PURPOSE

This document has been prepared for the sole purpose of the Short Term Trading Market ('STTM') in accordance with rule 397 of the National Gas Rules (STTM rules).

DISCLAIMER

AEMO has made every reasonable effort to ensure the quality of the information in this publication but cannot guarantee that information, forecasts and assumptions are accurate, complete or appropriate for your circumstances. This publication does not include all of the information that an investor, participant or potential participant in the STTM might require, and does not amount to a recommendation of any investment.

Anyone proposing to use the information in this publication (which includes information and forecasts from third parties) should independently verify its accuracy, completeness and suitability for purpose, and obtain independent and specific advice from appropriate experts.

Accordingly, to the maximum extent permitted by law, AEMO and its officers, employees and consultants involved in the preparation of this publication:

- make no representation or warranty, express or implied, as to the currency, accuracy, reliability or completeness of the information in this publication; and
- are not liable (whether by reason of negligence or otherwise) for any statements, opinions, information or other matters contained in or derived from this publication, or any omissions from it, or in respect of a person's use of the information in this publication.

Acknowledgement

AEMO acknowledges the support, co-operation and contribution of all participants in providing data and information used in this publication.

Copyright

© 2019 Australian Energy Market Operator Limited. The material in this publication may be used in accordance with the [copyright permissions](#) on AEMO's website.

VERSION CONTROL

Version	Release date	Changes
1.0	05/12/2019	New document published quarterly

1. Introduction

MOS (Market Operator Service) estimates provide a guide of the largest daily increase and decrease MOS quantities that market participants may reasonably expect for each STTM pipeline. The MOS estimate is based on historical data and therefore does not limit the quantity of MOS that may be experienced in the future.

The MOS estimates also determine the value of any overrun MOS. If the MOS estimate (increase or decrease) for an STTM pipeline exceeds the total quantity of MOS offered for that pipeline (increase or decrease respectively), then any overrun MOS is paid at the weighted average price within the relevant MOS stack. Otherwise, if the total quantity of MOS offered for an STTM pipeline exceeds the MOS estimate then overrun MOS is paid at the highest priced offer within the stack.

In accordance with rule 397 of the National Gas Rules (STTM Rules), AEMO publishes MOS increase and decrease estimates for each STTM pipeline prior to the commencement of each monthly MOS period. In determining the MOS estimates for each MOS period, AEMO must use the data specified in Section 5.2 (b) of the STTM Procedures.

2. The MOS period

MOS periods are defined in section 5.1 of the STTM Procedures. The MOS estimates contained in this document relate to MOS periods: March 2022, April 2022 and May 2022.

The MOS quantities for each STTM pipeline and each gas day are as determined in accordance with the published methodology for determining MOS estimates¹.

2.1 Sydney, Adelaide and Brisbane hubs

The Sydney and Adelaide STTM hubs commenced operations on 1 September 2010, while the Brisbane STTM hub commenced operations on 1 December 2011. Therefore, the MOS estimate quantities are based on 'Method 3' for year 6 + of an STTM hub². This means they are derived using the actual daily MOS allocation quantities for the periods March from 2017 to 2021; April from 2017 to 2021; and May from 2017 to 2021; for the following STTM pipelines:

- Moomba to Sydney Pipeline (MSP) and Eastern Gas Pipeline (EGP) – these pipelines supply gas to the Sydney STTM hub; and
- Moomba to Adelaide Pipeline (MAP) and SEA Gas pipeline (SEA) – these pipelines supply gas to the Adelaide STTM hub.
- Roma to Brisbane Pipeline (RBP) – the sole pipeline that supplies gas to the Brisbane STTM hub.

The input data collected from the previous years was combined to create a larger and more representative sample of MOS allocations.

2.2 Explanation of MOS quantities and summary statistics

Positive MOS quantities indicate the requirements for increase MOS, whereas negative MOS quantities indicate the requirements for decrease MOS.

¹ AEMO, *Methodology for determining MOS estimates*, Available at: <http://www.aemo.com.au/Gas/Short-Term-Trading-Market-STTM/Market-operations/Market-Operator-Service>.

² AEMO, *Methodology for determining MOS estimates*, pg 22

STTM Rule 397(1)(a) requires AEMO to publish its estimate of the maximum quantity of MOS (by way of increase and decrease) likely to be required on any gas day in the relevant MOS period. This is provided in Table 1 below.

STTM Rule 397(1)(b) requires AEMO to publish its estimate of the range of daily quantities of MOS likely to be required, together with the number of gas days in the MOS period to which each of those estimated quantities applies. This is provided by month in the following sections tables and charts.

3. MOS Estimates

3.1 MOS Period March 2022

Table 1 Maximum MOS quantities (GJ)

	Sydney MSP	Sydney EGP	Adelaide MAP	Adelaide SEAGas	Brisbane RBP
MOS increase	14,458	17,570	6,724	1,170	5,702
MOS decrease	20,350	1,748	6,032	7,625	14,952

Figure 1 Curves of daily MOS quantities

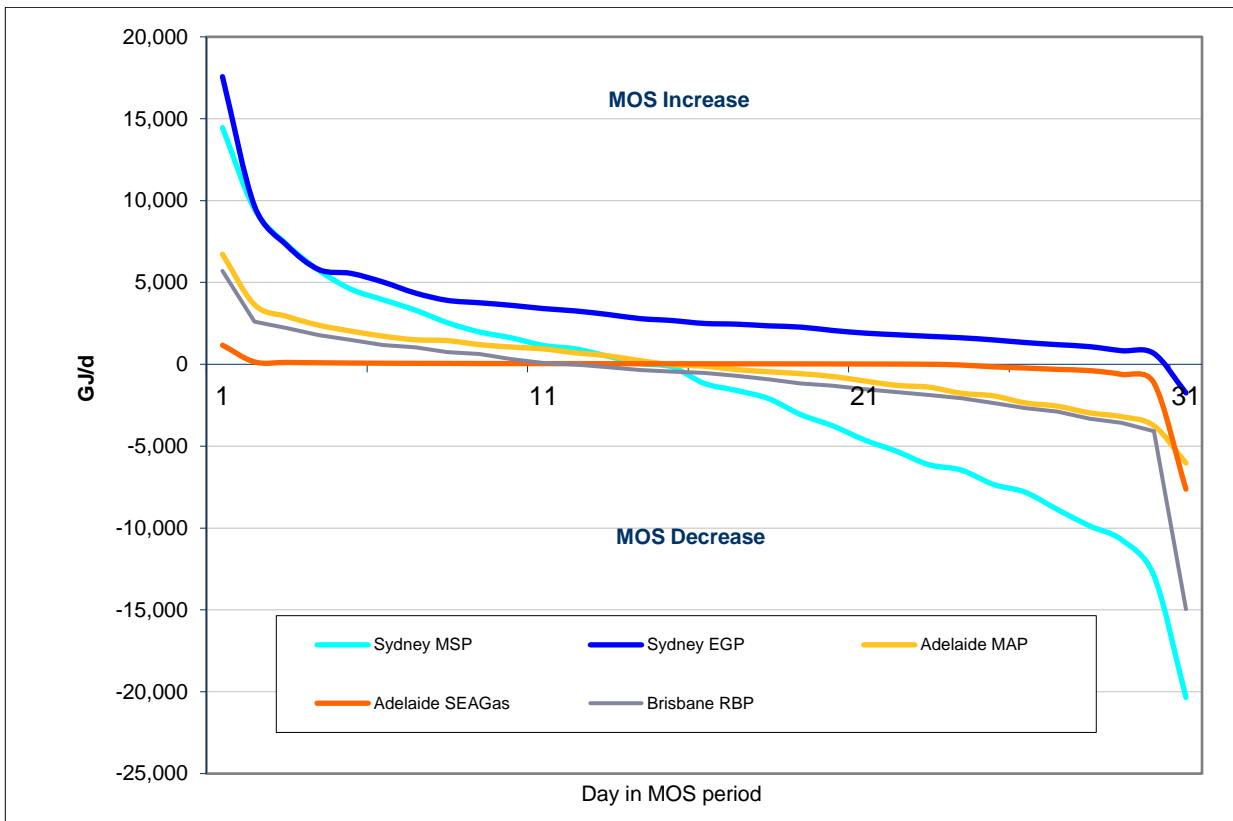


Table 2 Summary statistics of daily MOS quantities

	Summary statistics GJ/d				
	Sydney MSP	Sydney EGP	Adelaide MAP	Adelaide SEAGas	Brisbane RBP
Maximum	14,458	17,570	6,724	1,170	5,702
95%	8,402	8,462	3,283	129	2,410
75%	2,261	3,833	1,325	51	687
50%	-1,167	2,495	-119	32	-518
25%	-6,296	1,665	-1,583	-21	-1,979
5%	-11,807	748	-3,477	-875	-3,829
Minimum	-20,350	-1,748	-6,032	-7,625	-14,952
Mean	-1,762	3,393	-113	-267	-933
Std deviation	7,070	3,394	2,465	1,407	3,313
% days positive	45%	97%	45%	74%	35%
% days negative	55%	3%	55%	26%	65%

Figure 2 Distribution of daily MOS quantities

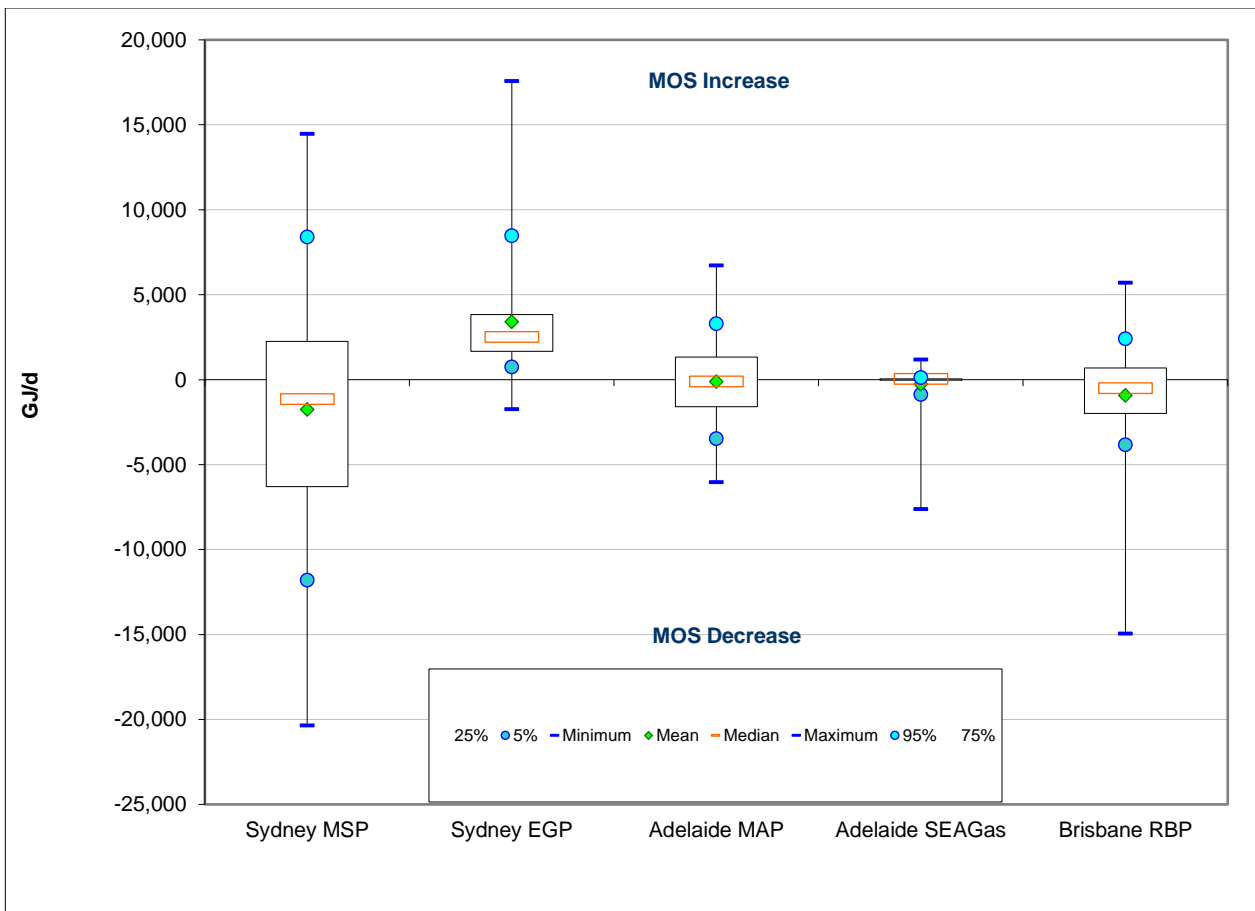


Table 3 Daily MOS quantities (GJ/d) for March 2022

No of days	Sydney MSP	Sydney EGP	Adelaide MAP	Adelaide SEAGas	Brisbane RBP
1	14,458	17,570	6,724	1,170	5,702
1	9,477	9,651	3,637	144	2,600
1	7,326	7,272	2,928	114	2,219
1	5,740	5,787	2,387	93	1,779
1	4,589	5,554	2,029	78	1,484
1	3,943	5,027	1,719	66	1,171
1	3,313	4,356	1,499	58	1,031
1	2,543	3,907	1,448	55	749
1	1,979	3,759	1,201	47	625
1	1,612	3,601	1,053	45	306
1	1,150	3,403	939	41	89
1	937	3,258	697	39	-25
1	495	3,042	522	37	-179
1	50	2,791	225	34	-351
1	-163	2,672	-27	33	-456
1	-1,167	2,495	-119	32	-518
1	-1,595	2,453	-323	29	-711
1	-2,093	2,349	-455	29	-924
1	-3,069	2,273	-574	26	-1,166
1	-3,756	2,067	-745	22	-1,312
1	-4,629	1,906	-1,020	19	-1,522
1	-5,322	1,804	-1,288	13	-1,708
1	-6,136	1,709	-1,397	3	-1,882
1	-6,456	1,621	-1,769	-44	-2,076
1	-7,334	1,490	-1,924	-154	-2,354
1	-7,818	1,328	-2,360	-228	-2,679
1	-8,871	1,201	-2,559	-311	-2,893
1	-9,872	1,078	-2,967	-385	-3,321
1	-10,725	831	-3,202	-620	-3,568
1	-12,889	664	-3,751	-1,129	-4,090
1	-20,350	-1,748	-6,032	-7,625	-14,952

3.2 MOS Period April 2022

Table 4 Maximum MOS quantities (GJ)

	Sydney MSP	Sydney EGP	Adelaide MAP	Adelaide SEAGas	Brisbane RBP
MOS increase	12,492	9,247	6,786	462	4,607
MOS decrease	42,677	7,309	10,755	9,166	7,751

Figure 3 Curves of daily MOS quantities

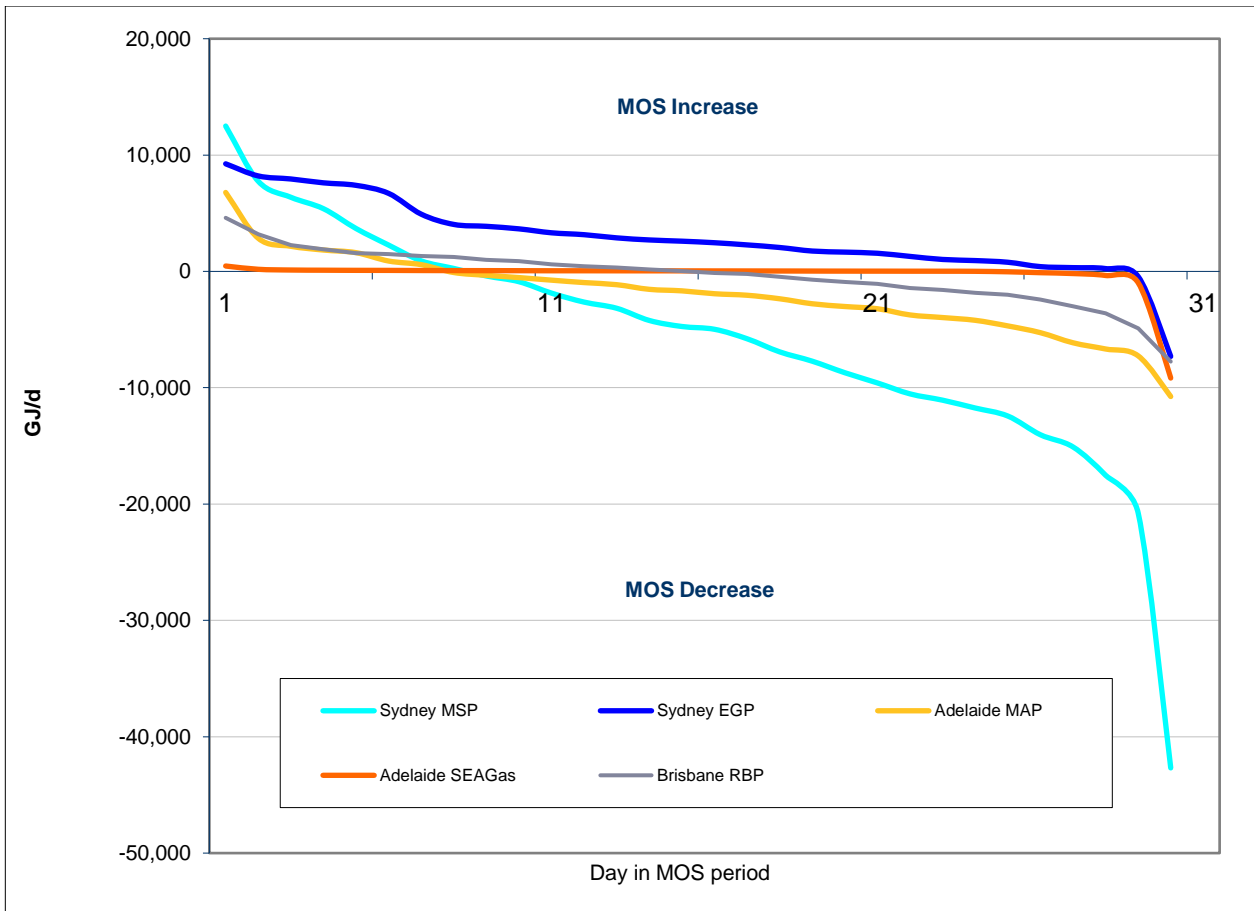


Table 5 Summary statistics of daily MOS quantities

	Summary statistics GJ/d				
	Sydney MSP	Sydney EGP	Adelaide MAP	Adelaide SEAGas	Brisbane RBP
Maximum	12,492	9,247	6,786	462	4,607
95%	7,129	8,089	2,538	154	2,773
75%	92	3,996	-157	69	1,181
50%	-4,855	2,531	-1,796	44	-54
25%	-10,934	1,093	-3,910	18	-1,558
5%	-19,305	-133	-6,993	-693	-4,314
Minimum	-42,677	-7,309	-10,755	-9,166	-7,751
Mean	-5,945	2,910	-1,944	-300	-367
Std deviation	10,422	3,289	3,469	1,689	2,444
% days positive	27%	93%	23%	80%	50%
% days negative	73%	7%	77%	20%	50%

Figure 4 Distribution of daily MOS quantities

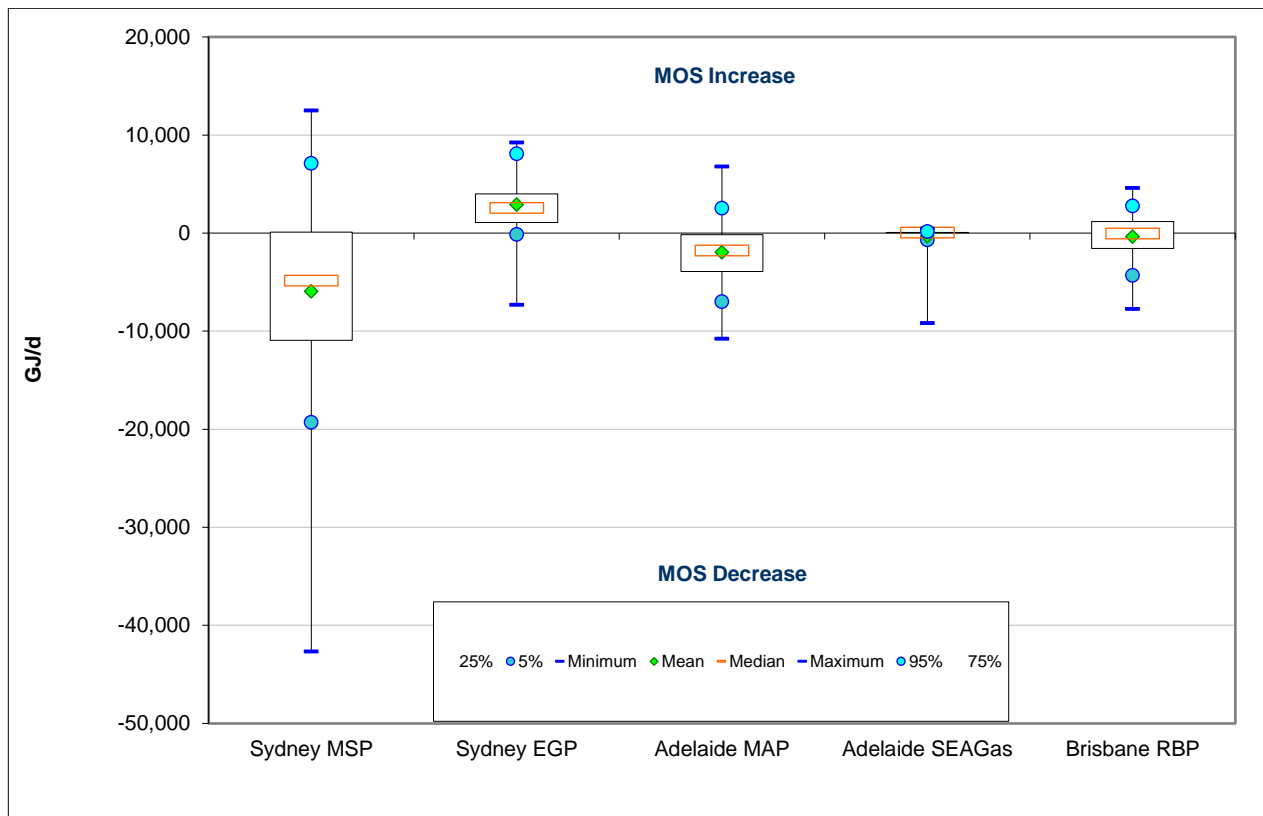


Table 6 Daily MOS quantities (GJ/d) for April 2022

No of days	Sydney MSP	Sydney EGP	Adelaide MAP	Adelaide SEAGas	Brisbane RBP
1	12,492	9,247	6,786	462	4,607
1	7,748	8,206	2,848	182	3,191
1	6,372	7,945	2,160	119	2,262
1	5,392	7,612	1,837	103	1,898
1	3,687	7,398	1,610	92	1,582
1	2,262	6,707	892	87	1,479
1	906	4,922	581	75	1,323
1	254	4,037	-97	70	1,240
1	-393	3,875	-336	66	1,003
1	-885	3,657	-533	62	883
1	-1,868	3,319	-753	56	610
1	-2,639	3,155	-962	54	441
1	-3,170	2,882	-1,143	51	335
1	-4,218	2,702	-1,541	48	179
1	-4,735	2,598	-1,672	46	35
1	-4,975	2,465	-1,920	42	-142
1	-5,791	2,278	-2,050	39	-211
1	-6,915	2,055	-2,352	35	-464
1	-7,718	1,749	-2,781	30	-719
1	-8,710	1,657	-3,018	24	-908
1	-9,587	1,558	-3,211	22	-1,076
1	-10,527	1,289	-3,742	19	-1,439
1	-11,069	1,028	-3,966	17	-1,597
1	-11,744	932	-4,203	8	-1,830
1	-12,430	787	-4,685	-33	-2,006
1	-14,040	410	-5,267	-111	-2,413
1	-15,087	323	-6,135	-183	-3,007
1	-17,521	243	-6,668	-352	-3,613
1	-20,764	-440	-7,258	-972	-4,887
1	-42,677	-7,309	-10,755	-9,166	-7,751

3.3 MOS Period May 2022

Table 7 Maximum MOS quantities (GJ)

	Sydney MSP	Sydney EGP	Adelaide MAP	Adelaide SEAGas	Brisbane RBP
MOS increase	13,912	16,395	8,978	239	4,824
MOS decrease	23,970	2,035	8,957	2,430	24,223

Figure 5 Curves of daily MOS quantities

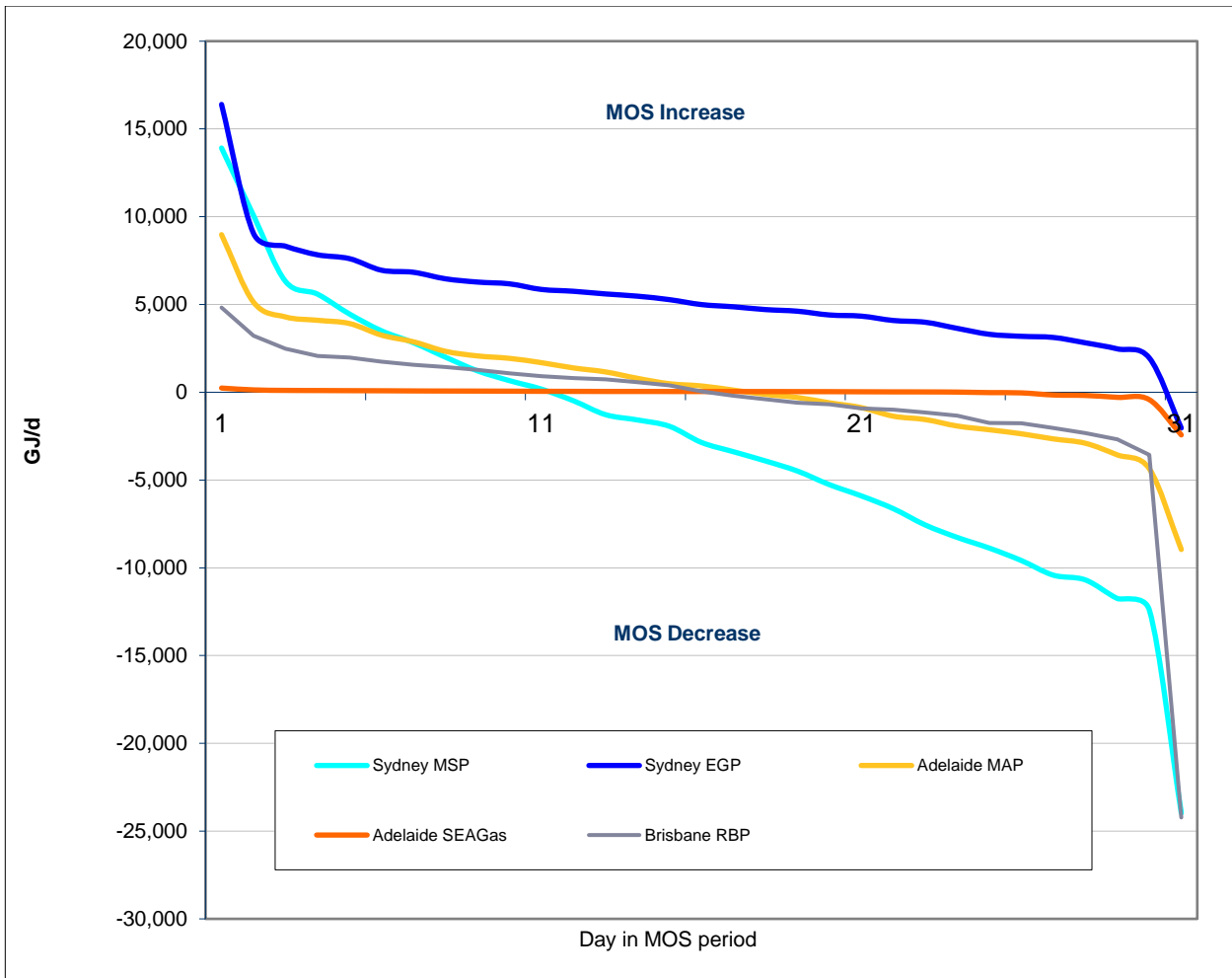


Table 8 Summary statistics of daily MOS quantities

	Summary statistics GJ/d				
	Sydney MSP	Sydney EGP	Adelaide MAP	Adelaide SEAGas	Brisbane RBP
Maximum	13,912	16,395	8,978	239	4,824
95%	8,192	8,683	4,710	120	2,858
75%	1,610	6,371	2,202	69	1,362
50%	-2,858	4,995	359	42	49
25%	-7,918	3,813	-1,740	15	-1,246
5%	-12,073	2,215	-3,963	-356	-3,123
Minimum	-23,970	-2,035	-8,957	-2,430	-24,223
Mean	-2,920	5,301	361	-64	-627
Std deviation	7,534	2,988	3,365	456	4,751
% days positive	35%	97%	55%	77%	52%
% days negative	65%	3%	45%	23%	48%

Figure 6 Distribution of daily MOS quantities

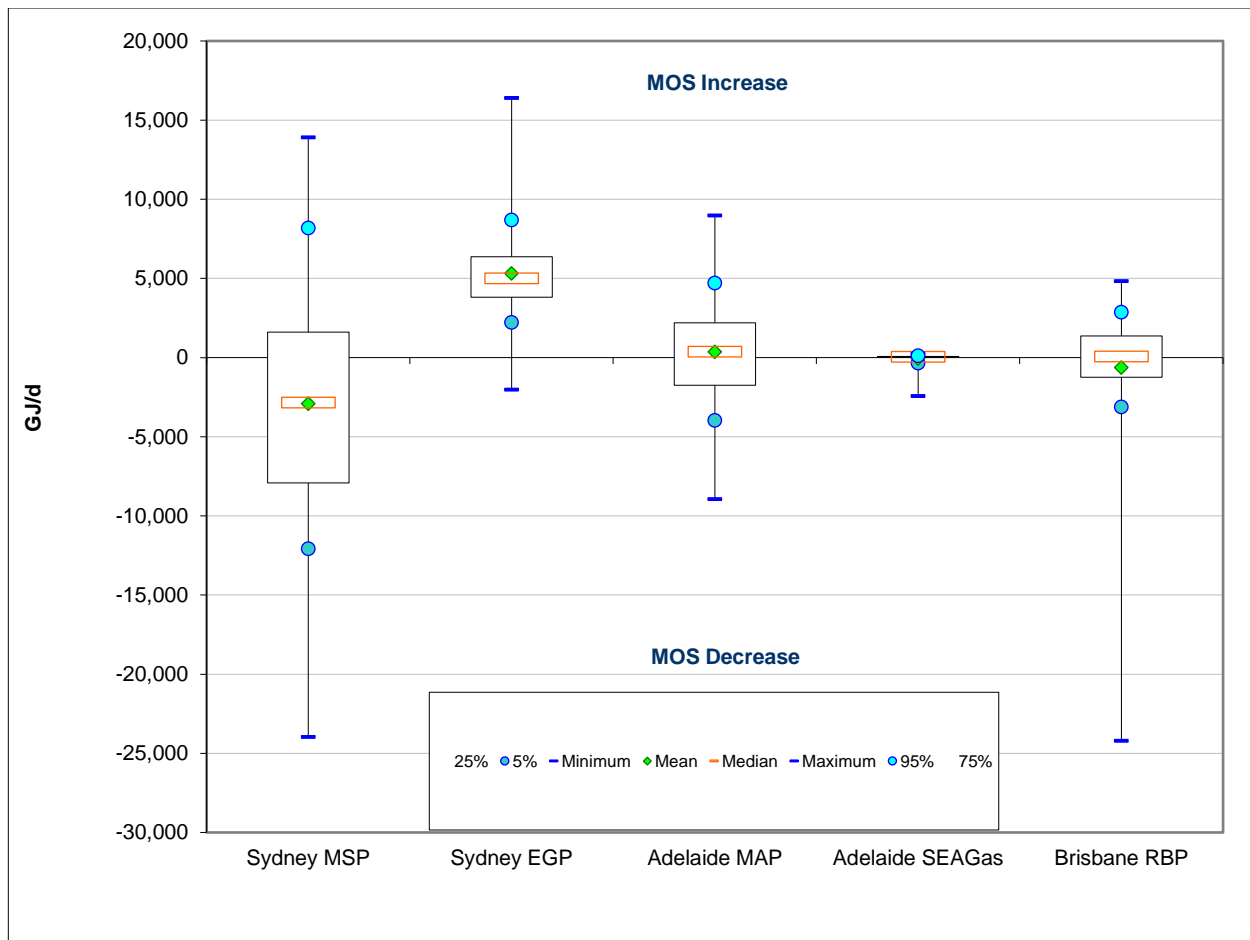


Table 9 Daily MOS quantities (GJ/d) for May 2022

No of days	Sydney MSP	Sydney EGP	Adelaide MAP	Adelaide SEAGas	Brisbane RBP
1	13,912	16,395	8,978	239	4,824
1	10,070	9,046	5,130	134	3,226
1	6,314	8,319	4,290	106	2,490
1	5,588	7,830	4,100	99	2,074
1	4,456	7,612	3,916	91	1,982
1	3,500	6,952	3,254	85	1,749
1	2,823	6,835	2,875	76	1,567
1	1,999	6,464	2,333	70	1,444
1	1,220	6,277	2,070	67	1,280
1	663	6,176	1,932	62	1,073
1	178	5,858	1,686	54	911
1	-484	5,753	1,385	51	805
1	-1,274	5,601	1,161	47	730
1	-1,577	5,474	793	46	568
1	-1,938	5,276	487	44	403
1	-2,858	4,995	359	42	49
1	-3,387	4,869	122	41	-194
1	-3,911	4,710	-119	40	-390
1	-4,488	4,618	-298	38	-588
1	-5,262	4,403	-601	34	-693
1	-5,905	4,336	-876	28	-915
1	-6,633	4,089	-1,364	23	-993
1	-7,564	3,988	-1,555	20	-1,155
1	-8,272	3,638	-1,924	10	-1,336
1	-8,877	3,302	-2,136	-20	-1,746
1	-9,585	3,187	-2,366	-35	-1,764
1	-10,419	3,122	-2,657	-155	-2,038
1	-10,689	2,818	-2,904	-182	-2,324
1	-11,748	2,473	-3,569	-290	-2,680
1	-12,398	1,957	-4,356	-421	-3,566
1	-23,970	-2,035	-8,957	-2,430	-24,223